

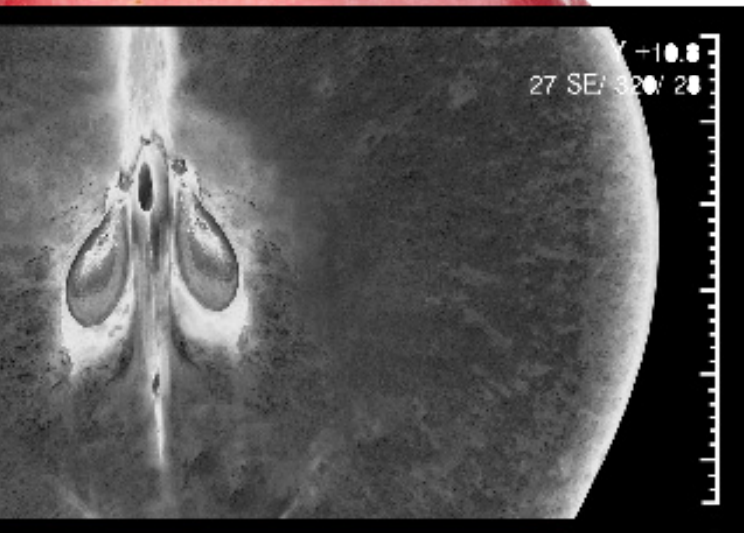


**Clinical
Oncology**

The Royal College of Radiologists



IPEM



RADIOTHERAPY ERRORS AND NEAR MISSES: HOW ERRORS HAPPEN AND WAYS OF PREVENTION

Venue: British Dental Association, London

CPD: 6 CREDITS



ELEKTA

PHILIPS

SIEMENS

RADIOTHERAPY ERRORS AND NEAR MISSES: HOW ERRORS HAPPEN AND WAYS OF PREVENTION

Venue: British Dental Association, London

Date: 23 October 2015

CPD: 6 CREDITS

Organised by Dr Hosney Yosef and Ms Una Findlay on behalf of the Oncology & Radiotherapy BIR Special Interest Group, this event will provide an overview of the major incidents in radiotherapy including why errors happen, reporting of errors and learning from errors.

It will be of interest to clinical oncologists, physicists, technologists, radiographers and radiotherapy manufacturers.

How do manufacturers work to prevent errors? What can doctors, physicists and radiographers do to prevent errors? These burning questions will be addressed.

Educational aims:

1. To provide a good education of how errors happen
2. Discover how to prevent errors
3. Learn from past incidents and local experience
4. Learn how errors can occur with the rapidly developing technology

09:00 Registration and refreshments

09:30 Welcome and introduction
Dr Hosney Yosef, Consultant Clinical Oncologist, Beatson West of Scotland Cancer Centre

09:40 Overview of major errors in radiotherapy; worldwide
Dr Edwin Aird, Consultant Clinical Scientist, Mount Vernon Hospital

10:10 Why errors happen
Dr Sara Erridge, Consultant Clinical Oncologist and Honorary Senior Lecturer, Western General Hospital

10:40 Refreshments

11:00 Chairperson's introduction
Ms Maria Murray, UK Radiation Protection Lead, Society and College of Radiographers

11:10 Learning from errors
Mr Martin Duxbury, Deputy Head of Radiotherapy, St James's Institute of Oncology

11:35 Safe implementation of new techniques and technology
Dr Carl Rowbottom, Head of Physics, Clatterbridge Cancer Centre

12:00 Safety: a manufacturer's perspective
Nia van Baalen, Varian

12:20 Role of industry in preventing errors
Simon Collinge, Elekta

12:40 Lunch

13:25 Chairperson's introduction
Dr David Bloomfield, Clinical Oncology Medical Director, RCR

23
OCTOBER
2015

- 13:35 When disasters happen—
crisis management**
Speaker to be confirmed
- 14:00 How to reduce contour errors**
Dr Tom Roques, Consultant
Oncologist, Norfolk & Norwich
University Hospital
- 14:20 Errors in verification (IGRT)**
Dr Helen McNair, Lead Research
Radiographer, The Royal
Marsden NHS Foundation Trust
- 14:40 Radiation incidents—The
Beatson experience**
Dr David Dodds, Clinical
Director, and Mr Garry Currie,
Head of Radiotherapy Physics,
Beatson West of Scotland
Cancer Centre
- 15:00 What does the patient want
to know about radiotherapy
errors**
Speaker to be confirmed
- 15:20 Refreshments**
- 15:40 Chairperson's introduction**
Dr Helen McNair, Lead Research
Radiographer, The Royal
Marsden NHS Foundation Trust
- 15:45 National learning from
radiotherapy errors and its
development**
Ms Una Findlay, Senior
Radiotherapy Clinical Officer,
PHE & Chair of PSRT
- 16:10 What might we expect from
the new medical exposure
regulations**
Mr Steve Ebdon-Jackson,
Medical Exposure Regulatory
Infrastructure Team, CRCE,
Public Health England
- 16:30 Can all errors be prevented –
round table discussion**
- 17:00 Close of event**

Registration fees

Non-BIR member	£250
BIR Consultant member	£145
BIR Non-Consultant member	£110
BIR Trainee member	£65
BIR Retired/Student member	£55

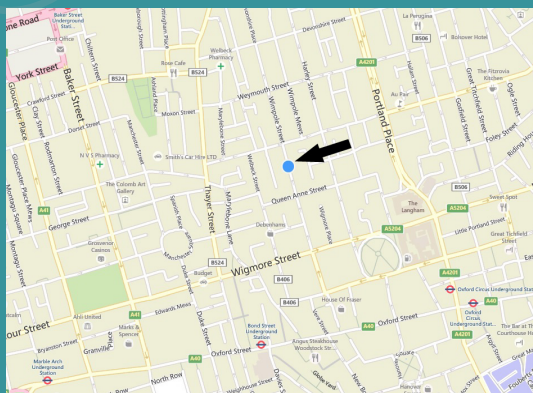
Join us

Join the BIR today to benefit from reduced delegate rates for our events.

For membership information visit:
www.bir.org.uk/join-us

RADIOTHERAPY ERRORS AND NEAR MISSES; HOW ERRORS HAPPEN AND WAYS OF PREVENTION

British Dental Association, 64 Wimpole Street, London, W1G 8YS



British Dental Association,
64 Wimpole Street,
London, W1G 8YS

BY LONDON UNDERGROUND:

Nearest stations: Central and Jubilee lines to Bond Street (less than 10 minutes walk) or Victoria, Bakerloo and Central lines Oxford Circus (less than 15 minutes walk).

BY BUS

Nearest bus routes: 6, 7, 10, 13, 15, 23, 25, 30, 55, 73, 94, 98, 113, 137, 139, 159, 175, 189, 274, 390 are all within walking distance to the BDA.

BY CAR

The BDA is in the congestion charging zone. Wimpole Street is a one-way street, approached from Henrietta Place.

PARKING NEAR THE BDA

Metered parking is available on the street outside the BDA. Car parks are located in Cavendish Square and Marylebone Lane, both 5 minutes walk away. For more information visit the City of Westminster website.

BY FOOT

Wimpole Street is located behind House of Fraser, off Oxford Street.



 @BIR_News

 /britishinstituteofradiology

 The British Institute of Radiology

48-50 St John Street, London, EC1M 4DG

www.bir.org.uk

Registered charity number: 215869

