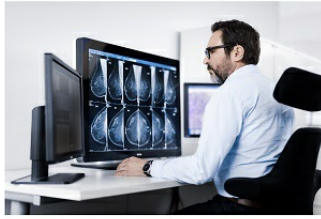


## US Tele-Mammography Group Selects Sectra as its Mammography Enterprise Imaging Vendor



---

International medical imaging IT company [Sectra](#) announces that Women's Imaging Associates has entered into a multi-year agreement to deploy Sectra Breast Imaging PACS for radiologist interpretation. The solution features intelligent pre-fetching and auto-routing of images from the provider sites to the radiologist reading locations, and it allows radiologists to read all types of breast imaging studies from one system.

Women's Imaging Associates, located in Birmingham, Alabama, offers a full range of imaging interpretations for over twenty hospitals, radiology groups, outpatient facilities and OB/GYN practices. Reading expertise includes 2D and 3D screening mammography, diagnostic mammography, breast MRI, breast ultrasound, as well as OB and pelvic ultrasound.

"A major factor influencing our choice of Sectra PACS is its enhanced efficiency for viewing the entire spectrum of breast imaging studies," according to Caroline Reich M.D., a radiologist and CEO of Women's Imaging Associates. "Also important to our practice is the ability to provide MRI CAD for our centers offering breast MRI services."

Sectra PACS displays ultrasound and MRI images side-by-side with digital mammograms, facilitating comparison of current and prior images according to radiologist preference. "Sectra's ability to provide intelligent auto-routing of images to the proper radiologist reading location is a key differentiator of our enterprise solution," says Mikael Anden, president of Sectra North America.

Sectra Enterprise Imaging will be showcased in booth #6113 at RSNA. Read more and book a meeting at [www.sectra.com/RSNA](http://www.sectra.com/RSNA).

### **About Women's Imaging Associates**

Women's Imaging Associates is an independent radiology practice offering breast imaging expertise in partnership with physicians providing women's health services. We work with hospitals, radiology groups, outpatient facilities and OB/GYN groups. Our singular focus on, and specialization in, breast imaging affords our clients (and their patients) significant advantages - from diagnostic accuracy to tailored service and support. Read more at [www.womensimagingassociates.com](http://www.womensimagingassociates.com)

**Source & Image Credit:** [Sectra](#)

Published on : Thu, 10 Nov 2016