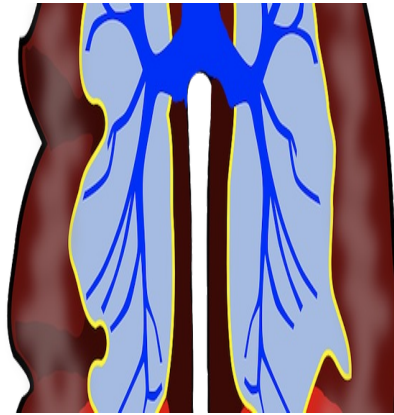




Screening for Lung Cancer: The NELSON study



A recently published article in JBR-BTR details the Dutch NELSON trial, which is the first randomised lung cancer screening trial in which pulmonary nodule management is based on volumetry.

The NELSON study is an ongoing multicentre randomised controlled multi-detector low-dose computed tomography lung cancer screening trial. The primary object is to investigate whether chest CT screening in year 1, 2, 4 and 6.5 will decrease lung cancer mortality by at least 25% in high-risk (ex-)smokers between 50 and 75 years of age compared to a control group receiving no screening.

The first results have shown the value of 3D-based lung nodule management for CT lung cancer screening, with very high negative predictive values found in the first and second screening round.

Published on : Mon, 15 Jul 2013