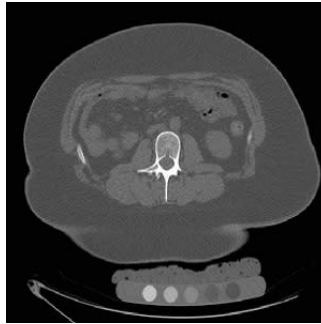

#RSNA20: Sleeve Gastrectomy in Teenagers Weakens Bones



Childhood obesity is a major public health issue. Over the last ten years, the prevalence of childhood obesity has consistently increased. Sleeve gastrectomy is the most common bariatric surgery procedure performed in both children and adults. In this procedure, 75% of the stomach is removed to restrict food intake and induce weight loss. It results in a typically round stomach taking on the shape of a tube or sleeve.

The number of sleeve gastrectomy procedures performed on adolescents increased 100-fold from 2005 to 2014. A study was conducted to determine the effects of sleeve gastrectomy performed on adolescents during the crucial years when bone mass is being accrued.

The study examined 52 adolescents with moderate to severe obesity, 26 of whom underwent sleeve gastrectomy. The other 26 were in the control group. Mean age was 17.5 years, and mean body mass index (BMI) was 45. BMI of 30 or above is considered obese. Thirty-eight of study participants were girls. Before and 12 months after sleeve gastrectomy (or no surgery), the patients underwent quantitative CT of the lumbar spine, to quantify volumetric bone mineral density. Quantitative CT is a highly accurate technique for detecting changes in volumetric bone mineral density after extreme weight loss.

Recent studies have shown that bone marrow fat responds to changes in nutrition and may serve as a biomarker for bone quality. Therefore, patients underwent proton MR spectroscopy to quantify bone marrow fat of the lumbar spine.

One year following surgery, the adolescents who underwent sleeve gastrectomy lost 34 (+/-13) kg, or 75 (+/-28) pounds, while there was no significant change in weight in the control group. Compared to the controls, sleeve gastrectomy patients had a significant increase in bone marrow fat and a decrease in bone density in the lumbar spine.

"Adolescents who underwent sleeve gastrectomy had bone loss and an increase in bone marrow fat, despite marked loss of body fat," said lead investigator Miriam A. Bredella, MD, professor of radiology at Harvard Medical School in Boston, Massachusetts, and vice chair of the Department of Radiology at Massachusetts General Hospital in Boston. "While weight-loss surgery is successful for weight loss and improving metabolic disorders, it has negative effects on bone."

Dr. Bredella said the loss of bone density following sleeve gastrectomy was expected because greater weight-bearing strengthens bones. In addition to a loss of bone density, other effects of weight-loss surgery include a disruption of hormones and nutrients important for bone health.

"We need to identify mechanisms that will help prevent bone loss in these patients and to make adolescents with obesity more aware of bone health," she said. "Adolescence is the critical time for bone mass accrual, and any process that interferes with bone accrual during this time can have dire consequences later in life."

Source: RSNA

Image Credit: RSNA

Published on : Mon, 30 Nov 2020