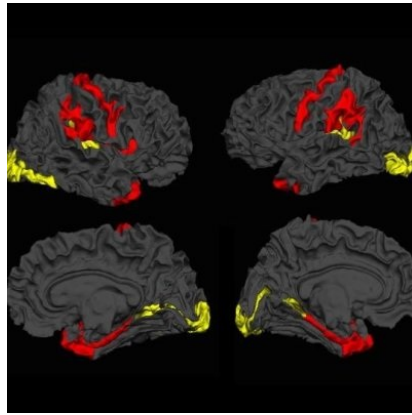




## Imaging Study Shows Ability To Reverse Effects Of Schizophrenia



An international team of scientists has shown that the brains of patients with schizophrenia have the capacity to reorganise and fight the illness. This is the first time that imaging data has been used to show that our brains may have the ability to reverse the effects of schizophrenia.

Schizophrenia is an illness generally associated with a widespread reduction in brain tissue volume. However, a recent study found that a subtle increase in tissue also occurs in certain brain regions.

The study followed 98 patients with schizophrenia and compared them to 83 patients without schizophrenia. The team used Magnetic Resonance Imaging (MRI) and a sophisticated approach called covariance analysis to record the amount of brain tissue increase. Due to the subtlety and the distributed nature of increase, this had not been demonstrated in patients before now.

According to [Lawson Health Research Institute's](#) Dr. Lena Palaniyappan, there is an overarching feeling that curing people with a severe mental illness, such as schizophrenia is not possible. "Even the state-of-art frontline treatments aim merely for a reduction rather than a reversal of the cognitive and functional deficits caused by the illness," says Dr. Palaniyappan, who is the Medical Director at the Prevention & Early Intervention Program for Psychoses (PEPP) at London Health Sciences Centre (LHSC).

This comes from a long-standing notion that schizophrenia is a degenerative illness, with the seeds of damage sown very early during the course of brain development. "Our results highlight that despite the severity of tissue damage, the brain of a patient with schizophrenia is constantly attempting to reorganise itself, possibly to rescue itself or limit the damage," said Dr. Palaniyappan.

The team's next step is to clarify the evolution of this brain tissue reorganisation process by repeatedly scanning individual patients with early schizophrenia and study the effect of this reorganisation on their recovery.

"These findings are important not only because of their novelty and the rigour of the study, but because they point the way to the development of targeted treatments that potentially could better address some of the core pathology in schizophrenia," explained Dr. Jeffrey Reiss, Site Chief, Psychiatry, LHSC.

"Brain plasticity and the development of related therapies would contribute to a new optimism in an illness that was 100 years ago described as premature dementia for its seemingly progressive deterioration."

"Dr. Palaniyappan and his colleagues have opened new avenues of research into our understanding of schizophrenia," said Dr. Paul Links, Chair/Chief, Psychiatry, LHSC. "Their findings may lead us to be able to

harness the brain's own compensatory changes in the face of this illness and improve recovery. We are excited that Dr. Palaniyappan will be continuing this important clinical research here in London with his international colleagues.”

The project is the result of an international collaboration among scientists in Nottingham, UK, Shanghai and Changsha, People's Republic of China, Roberts Research Institutes at Western University and Lawson Health Research Institute.

The study, “Dynamic cerebral reorganisation in the pathophysiology of schizophrenia: a MRI-derived cortical thickness study” is published online in the current issue of [Psychology Medicine](#).

**Reference:**

S. Guo, L. Palaniyappan, P. F. Liddle, J. Feng. **Dynamic cerebral reorganization in the pathophysiology of schizophrenia: a MRI-derived cortical thickness study.** *Psychological Medicine*, 2016; 1 DOI: [10.1017/S0033291716000994](https://doi.org/10.1017/S0033291716000994)

Published on : Mon, 30 May 2016