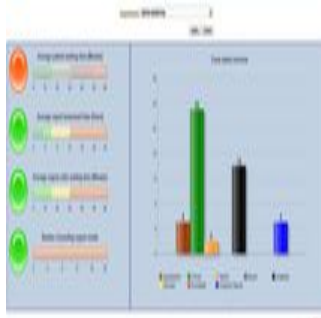

Agfa HealthCare launches second version of its IMPAX Business Intelligence solution



Agfa HealthCare announced today that it will preview version 2 of its IMPAX Business Intelligence solution to the U.S. market at the 2012 RSNA meeting, in Chicago, USA.

Built on Agfa HealthCare's IMPAX advanced, integrated RIS/PACS workflow system, the solution allows healthcare managers and care providers to use existing data to increase transparency, improve the patient experience, identify cost saving opportunities, and more.

IMPAX Business Intelligence v2 includes enhancements to IMPAX Business Intelligence v1 that improve accessibility and optimise usage. It is already in use at Imelda Hospital in Bonheiden, Belgium.

IMPAX Business Intelligence allows hospitals and healthcare facilities to intelligently combine clinical and quality data with financial and administrative data, to generate usable business intelligence.

It delivers reports and dashboards intended for managers of imaging departments. With this business intelligence, they can make their operations more transparent, enrich the patient experience, improve the decision-making process, identify trends and potential cost savings and improve data quality and integrity.

"IMPAX Business Intelligence is a strong solution that is well worth the effort it requires from the hospital," comments Dr. Dirk Perdieu, radiologist and head of the Medical Imaging department at Imelda Hospital in Bonheiden, Belgium, where IMPAX Business Intelligence v2 has been deployed. "It supports the department in decision making, helps us work more efficiently and has clear value for the long and short terms. For example, we intensively use a dashboard that shows all of the patients in the radiology department with colour codes according to their waiting times. This allows us to react to decrease patient waiting times."

The IMPAX Business Intelligence solution offers a single point of access to both live and historical data analysis and can be accessed from anywhere via a web browser. A live dashboard monitors and provides alerts to the patient's workflow in real time. With 90 standard reports already available upon implementation, it also includes an easy-to-use custom report building option. The drill-down capacity and ad-hoc structured queries to mine clinical data support the optimised use of existing data. IMPAX Business Intelligence v2 adds 7 new languages as well: Spanish, Brazilian Portuguese, Finnish, Norwegian, Swedish, Danish, and Dutch.

"Agfa HealthCare's IMPAX Business Intelligence solution is designed to deliver the insight managers need for truly informed decision-making. By adding new functionalities, we continue to demonstrate the attention we pay to our customers' evolving needs and input, in order to promote their success as a healthcare organization," says Alexandre Salvador, Global Business and Solution Manager, Business Intelligence, Agfa HealthCare.

Published on : Mon, 26 Nov 2012