

Affidea Enters into an Agreement to Acquire MedEuropa Romania



Affidea Group, Europe's largest provider of advanced diagnostics, multi-speciality polyclinics and Centres of Excellence, announced today that it has entered into a binding agreement to acquire MedEuropa Romania, a renowned cancer care provider.

MedEuropa Romania operates four medical centres in Romania, spanning Constanta, Bucharest, Brasov, and Oradea, with one more centre set to open in Iasi. The company is renowned for its expertise in advanced cancer care, including Radiotherapy, Chemotherapy and broader oncology services, all of which integrate into Affidea's primary diagnostic and polyclinic portfolio in Romania. The acquisition adds radiotherapy services to Affidea's capability in Romania, complementing existing radiotherapy services that Affidea provides across its European footprint.



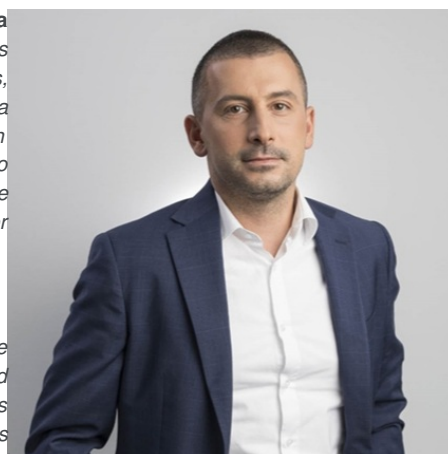
Guy Blomfield, CEO and Chairman of the Management Board for Affidea Group, added:

"At Affidea, we have a provenance in the provision of comprehensive cancer care pathways across several European countries, with a network of Community Clinics and Centres of Excellence which are dedicated to providing access and high-quality care to the patient communities we serve. Romania's healthcare market is embracing the challenge of improving cancer survivorship outcomes, and Affidea's integrated service model will have an important role in helping to improve early detection and diagnosis, as well as providing more access to radiotherapy services in community settings across Romania. Affidea and MedEuropa, both have impressive reputations for high quality patient care, and I am very confident that the integration of services will further enhance outcomes for oncology patients across Romania."

Razvan Predica, Country CEO for Affidea Romania and Hungary, stated:

"Cancer is claiming far too many lives in our communities, with approximately 100,000 people being diagnosed with an oncological disease in Romania every year. This acquisition isn't just about growth; it's about standing shoulder-to-shoulder with the National Health System and those affected by this relentless disease. We look forward to working with the great team of MedEuropa following the closing and continue delivering value for every individual impacted by cancer by increasing access to more comprehensive cancer care pathway from diagnosis to treatment and follow-up."

Philippe Jacobs, Chairman and Silviu Savin, CEO of MedEuropa commented: *"We are proud to have built a greenfield network of clinics providing high-quality patient care and treatments across Romania. We would like to thank our doctors and staff for their contributions over the past years. We believe that an integrated care solution is optimal for oncology patients and, therefore, we see the integration of MedEuropa in the larger Affidea family as an ideal avenue for delivering the best care and results for cancer patients in Romania."*



Completion of the acquisition is subject to the approval of the Romanian Competition Council. Affidea Group was advised by Rizioiu & Asociatii and Clifford Chance as legal advisors, while Deloitte served as financial advisor. The sellers were advised by Biris Goran and Linklaters as legal advisors.

Source & Image Credit: [Affidea](#)

Published on : Mon, 4 Mar 2024