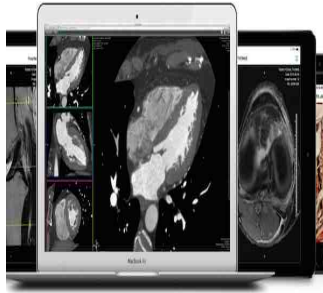

Calgary Scientific Extends Web and Mobile Image Access: Partnership with Hyland



Calgary Scientific Inc. has announced a partnership with OnBase by Hyland to extend mobile image access capability to its enterprise content management (ECM) platform. OnBase makes information readily available to clinicians and staff within the applications they already use and know.

OnBase integrated Calgary Scientific's diagnostically-cleared medical imaging technology, ResolutionMD®, into its Patient Window so caregivers can access patient records from web or mobile devices and make treatment decisions using FDA Class II-cleared software. Providing mobile access to diagnostic images in OnBase supports the growing demand for collaborative and telehealth solutions, enabling physicians to work in new ways whether they are inside or outside the walls of a caregiving facility.

"The need for a fully integrated and complete medical record is more important than ever," said Susan deCathelineau, vice president of healthcare sales and services, Hyland, creator of OnBase. "Our partnership with Calgary Scientific helps us continue to provide quick and simple access to all clinical content in the healthcare continuum, enabling clinicians to deliver the highest quality of care."

OnBase is exclusively endorsed by the American Hospital Association (AHA), has been named a leader in Gartner Inc.'s Magic Quadrant for Enterprise Content Management* for five consecutive years and is recognised as the first vendor within the ECM market to offer cloud and mobile solutions.

"I'm excited to partner with a company that is so strategically aligned with our pursuit to improve the way clinician's work across healthcare enterprises" said Pierre Lemire, President and CTO with Calgary Scientific. "The combination of ResolutionMD's mobile-first approach and OnBase's single point of access to information enables caregivers to make faster, more informed treatment decisions from any location and deliver a new standard of patient care."

Published on : Thu, 23 Oct 2014